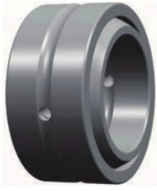
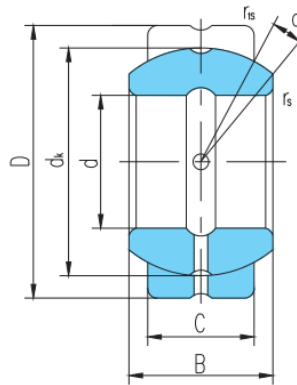


GEF...ES



滑动摩擦副: 钢 / 钢

Sliding contact surfaces: Steel / Steel



select	Inquiry	Bearing number	Overall dimension [mm]								Rated load [kN]		Weight kg
			d	D	B	C	dk	rs min	r1s min	a°	live load	Static load	
GEF12ES	12	22	11	9	18	0.5	0.5	7	13	68	0.019		
GEF15ES	15	26	13	11	22	0.5	0.5	6	20	102	0.031		
GEF20ES	20	32	16	14	28	0.5	0.5	4	33	166	0.054		
GEF22ES	22	37	19	16	32	0.5	0.5	6	43	217	0.088		
GEF25ES	25	42	21	18	36	0.5	0.5	5	55	275	0.128		
GEF30ES	30	50	27	23	45	1	1	6	87	439	0.232		
GEF35ES	35	55	30	26	50	1	1	5	110	552	0.291		
GEF40ES	40	62	33	28	55	1	1	6	130	654	0.392		
GEF45ES	45	72	36	31	62	1	1	5	163	816	0.609		
GEF50ES	50	80	42	36	72	1	1	5	220	1100	0.885		
GEF55ES	55	90	47	40	80	1	1	6	272	1360	1.29		
GEF60ES	60	100	53	45	90	1	1	6	344	1720	1.84		
GEF65ES	65	105	55	47	94	1	1	5	375	1870	2.03		
GEF70ES	70	110	58	50	100	1	1	5	425	2125	2.28		
GEF75ES	75	120	64	55	no	1	1	5	510	2570	3.08		
GEF80ES	80	130	70	60	120	1	1	5	610	3060	4.04		
GEF85ES	85	135	74	63	125	1	1	6	669	3340	4.44		
GEF90ES	90	140	76	65	130	1	1	5	718	3590	4.79		
GEF95ES	95	150	82	70	140	1	1	5	833	4165	6.07		

GEF...ES

GEF100ES	100	160	88	75	150	1.5	1.5	5	956	4780	7.56
GEF110ES	110	170	93	80	160	1.5	1.5	5	1080	5440	8.63
GEF115ES	115	180	98	85	165	1.5	1.5	5	1190	5960	10.4
GEF120ES	120	190	105	90	175	1.5	1.5	6	1330	6690	12.5
GEF130ES	130	200	110	95	185	1.5	1.5	5	1490	7460	14
GEF150ES	150	220	120	105	205	1.5	1.5	5	1820	9140	17.2