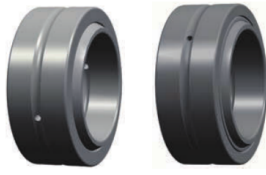
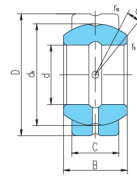


# GEZ...ES□ES-2RS

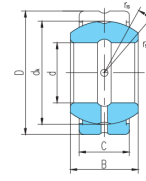


滑动摩擦副：钢 / 钢

Sliding contact surfaces: Steel / Steel



GEZ...ES



GEZ...ES-2RS

select	Inquiry	Bearing number		Overall dimension□mm□								Rated load □kN□		Weight kg
		d	D	B	C	dk	r <sub>ks</sub> min	r <sub>ls</sub> min	a°	live load	Static load			
GEZ12ES		12.7	22.225	11.1	9.525	18	0.15	0.6	6	13	41	0.022		
GEZ12ES		0.5	0.875	0.437	0.375	0.709	0.006	0.024	6	13	41	0.022		
GEZ15ES		15.875	26.988	13.894	11.913	23	0.15	0.6	6	22	65	0.036		
GEZ15ES		0.625	1.0625	0.547	0.469	0.906	0.006	0.024	6	22	65	0.036		
GEZ19ES	GEZ19ES-2RS	19.05	31.75	16.662	14.275	27.5	0.3	0.6	6	31	95	0.053		
GEZ19ES	GEZ19ES-2RS	0.75	1.25	0.656	0.562	1.083	0.012	0.024	6	31	95	0.053		
GEZ22ES	GEZ22ES-2RS	22.225	36.513	19.431	16.662	32	0.3	0.6	6	42	127	0.085		
GEZ22ES	GEZ22ES-2RS	0.875	1.4375	0.756	0.656	1.26	0.012	0.024	6	42	127	0.085		
GEZ25ES	GEZ25ES-2RS	25.4	41.275	22.225	19.05	36.5	0.3	0.6	6	56	166	0.121		
GEZ25ES	GEZ25ES-2RS	1	1.625	0.875	0.75	1.437	0.012	24	6	56	166	0.121		
GEZ31ES	GEZ31ES-2RS	31.75	50.8	27.762	23.8	45.5	0.6	0.6	6	86	260	0.23		
GEZ31ES	GEZ31ES-2RS	1.25	2	1.093	0.937	1.791	0.024	0.024	6	86	260	0.23		
GEZ34ES	GEZ34ES-2RS	34.925	55.563	30.15	26.187	49	0.6	1	5	102	310	0.35		
GEZ34ES	GEZ34ES-2RS	1.375	2.1875	1.187	1.031	1.929	0.024	0.04	5	102	310	0.35		
GEZ38ES	GEZ38ES-2RS	38.1	61.913	33.325	28.575	54.7	0.6	1	6	125	375	0.42		
GEZ38ES	GEZ38ES-2RS	1.5	2.4375	1.312	1.125	2.154	0.024	0.04	6	125	375	0.42		
GEZ44ES	GEZ44ES - 2RS	44.45	71.438	38.887	33.325	63.9	0.6	1	6	170	510	0.64		
GEZ44ES	GEZ44ES - 2RS	1.75	2.8125	1.531	1.312	2.516	0.024	0.04	6	170	510	0.64		
GEZ50ES	GEZ50ES-2RS	50.8	80.963	44.45	38.1	73	0.6	1	6	224	670	0.93		
GEZ50ES	GEZ50ES-2RS	2	3.1875	1.75	1.5	2.874	0.024	0.04	6	224	670	0.93		
GEZ57ES	GEZ57ES-2RS	57.15	90.488	50.013	42.85	82	0.6	1	6	280	850	1.3		
GEZ57ES	GEZ57ES-2RS	2.25	3.5625	1.969	1.687	3.228	0.024	0.04	6	280	850	1.3		
GEZ63ES	GEZ63ES-2RS	63.5	100.013	55.55	47.625	92	1	1	6	355	1060	1.85		
GEZ63ES	GEZ63ES-2RS	2.5	3.9375	2.187	1.875	3.622	0.04	0.04	6	355	1060	1.85		
GEZ69ES	GEZ69ES-2RS	69.85	111.125	61.112	52.375	100	1	1	6	415	1250	2.4		
GEZ69ES	GEZ69ES-2RS	2.75	4.375	2.406	2.062	3.937	0.04	0.04	6	415	1250	2.4		
GEZ76ES	GEZ76ES-2RS	76.2	120.65	66.675	57.15	109.5	1	1	6	500	1500	3.1		

GEZ...ES□ES-2RS

GEZ76ES	GEZ76ES-2RS	3	4.75	2.625	2.25	4.311	0.04	0.04	6	500	1500	3.1
GEZ82ES	GEZ82ES-2RS	82.55	130.175	72.238	61.9	119	1	1	6	585	1760	3.8
GEZ82ES	GEZ82ES-2RS	3.25	5.125	2.844	2.437	4.685	0.04	0.04	6	585	1760	3.8