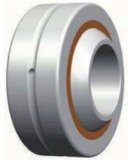
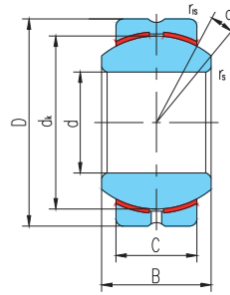


GEBK..S



滑动摩擦副: 钢 / 青铜
Sliding contact surfaces: Steel / Bronze



select	Inquiry	Bearing number	Overall dimension [mm]								Rated load [kN]		Weight kg
			d	D	B	C	d _k	r _s min	r _{1s} min	a°	live load	Static load	
GEBK5S	5	16	8	6	11.112	0.3	0.3	13	3.3	7.8	0.009		
GEBK6S	6	18	9	6.75	12.7	0.3	0.3	13	4.3	9.8	0.013		
GEBK8S	8	22	12	9	15.88	0.3	0.3	14	6.8	16	0.024		
GEBK10S	10	26	14	10.5	19.05	0.3	0.6	14	10	23	0.039		
GEBK12S	12	30	16	12	22.23	0.3	0.6	13	13	31	0.058		
GEBK14S	14	34	19	13.5	25.4	0.3	0.6	16	17	40	0.084		
GEBK16S	16	38	21	15	28.58	0.3	0.6	15	21	50	0.118		
GEBK18S	18	42	23	16.5	31.75	0.6	0.6	15	26	61	0.16		
GEBK20S	20	46	25	18	34.93	0.6	0.6	15	31	73	0.21		
GEBK22S	22	50	28	20	38.1	0.6	0.6	15	38	88	0.26		
GEBK25S	25	56	31	22	42.86	0.6	0.6	15	47	110	0.39		
GEBK28S	28	62	35	25	47.63	0.6	0.6	15	59	138	0.5		
GEBK30S	30	66	37	25	50.8	0.6	0.6	17	63	148	0.61		