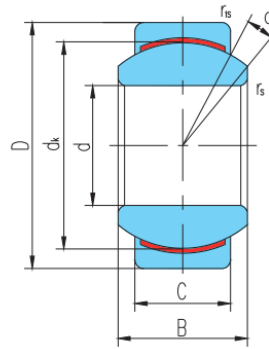


# GE...C



滑动摩擦副：钢 / PTFE 复合材料  
Sliding contact surfaces: Steel / PTFE composite material



select	Inquiry	Bearing number	Overall dimension [mm]								Rated load [kN]		Weight kg
			d	D	B	C	dk	rs min	r1s min	a°	live load	Static load	
GE4C	4	12	5	3	8	0.3	0.3	16	2.1	5.4	0.003		
GE5C	5	14	6	4	10	0.3	0.3	13	3.6	9.1	0.005		
GE6C	6	14	6	4	10	0.3	0.3	13	3.6	9.1	0.004		
GE8C	8	16	8	5	13	0.3	0.3	15	5.8	14	0.007		
GE10C	10	19	9	6	16	0.3	3	12	8.6	21	0.011		
GE12C	12	22	10	7	18	0.3	3	10	11	28	0.017		
GE15C	15	26	12	9	22	0.3	0.3	8	18	45	0.026		
GE17C	17	30	14	10	25	0.3	3	10	22	56	0.04		
GE20C	20	35	16	12	29	0.3	0.3	9	31	78	0.064		
GE25C	25	42	20	16	35.5	0.6	0.6	7	51	127	0.115		
GE30C	30	47	22	18	40.7	0.6	0.6	6	65	166	0.149		
GE35C	35	55	25	20	47	0.6	1	6	84	211	0.228		
GE40C	40	62	28	22	53	0.6	1	7	104	262	0.318		
GE45C	45	68	32	25	60	0.6	1	7	135	337	0.421		
GE50C	50	75	35	28	66	0.6	1	6	166	415	0.562		
GEG4C	4	14	7	4	10	0.3	0.3	20	3.6	9.1	0.005		
GEG5C	5	16	9	5	13	0.3	0.3	21	5.8	14	0.008		
GEG6C	6	16	9	5	13	0.3	0.3	21	5.8	14	0.006		
GEG8C	8	19	11	6	16	0.3	0.3	21	8.6	21	0.014		

## GE...C

---

GEG10C	10	22	12	7	18	0.3	3	18	11	28	0.021
GEG12C	12	26	15	9	22	0.3	0.3	18	18	45	0.033
GEG15C	15	30	16	10	25	0.3	3	16	22	56	0.049
GEG17C	17	35	20	12	29	0.3	0.3	19	31	78	0.083
GEG20C	20	42	25	16	35.5	3	0.3	17	51	127	0.153
GEG25C	25	47	28	18	40.7	0.6	0.6	17	65	166	0.203
GEG30C	30	55	32	20	47	0.6	0.6	17	84	211	0.304
GEG35C	35	62	35	22	53	0.6	1	16	104	262	0.408
GEG40C	40	68	40	25	60	0.6	1	17	135	337	0.542
GEG45C	45	75	43	28	66	0.6	1	15	166	415	0.713