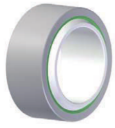
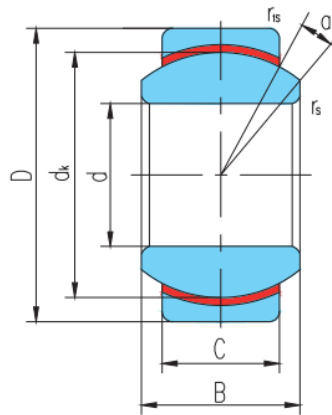


GE...N



滑动摩擦副: 钢 / PTFE 塑料
Sliding contact surfaces: Stainless steel / PTFE plastic



select	Inquiry	Bearing number	Overall dimension [mm]								Rated load [kN]		Weight kg
			d	D	B	C	dk	rs min	r1s min	a°	live load	Static load	
GE10N	10	19	9	6	16	0.3	0.3	12	5.7	8.6	0.011		
GE12N	12	22	10	7	18	0.3	0.3	10	7.5	11	0.017		
GE15N	15	26	12	9	22	0.3	0.3	8	11	17	0.026		
GE17N	17	30	14	10	25	0.3	0.3	10	15	22	0.04		
GE20N	20	35	16	12	29	3	0.3	9	20	31	0.064		
GE25N	25	42	20	16	35.5	0.6	0.6	7	34	51	0.115		
GE30N	30	47	22	18	40.7	0.6	0.6	6	43	65	0.149		
GE35N	35	55	25	20	47	0.6	1	6	56	84	0.228		
GE40N	40	62	28	22	53	0.6	1	7	69	104	0.318		
GE45N	45	68	32	25	60	0.6	1	7	90	135	0.421		
GE50N	50	75	35	28	66	0.6	1	6	110	166	0.562		
GE60N	60	90	44	36	80	1	1	6	172	259	1.03		
GEG8N	8	19	11	6	16	0.3	0.3	21	5.7	8.6	0.014		
GEG10N	10	22	12	7	18	0.3	0.3	18	7.5	11	0.021		
GEG12N	12	26	15	9	22	3	0.3	18	11	17	0.033		
GEG15N	15	30	16	10	25	0.3	0.3	16	15	22	0.049		
GEG17N	17	35	20	12	29	0.3	0.3	19	20	31	0.083		
GEG20N	20	42	25	16	35.5	3	0.6	17	34	51	0.153		

GE...N

GEG25N	25	47	28	18	40.7	0.6	0.6	17	43	65	0.203
GEG30N	30	55	32	20	47	0.6	1	17	56	84	0.304
GEG35N	35	62	35	22	53	0.6	1	16	69	104	0.408
GEG40N	40	68	40	25	60	0.6	1	17	90	135	0.542
GEG45N	45	75	43	28	66	0.6	1	15	110	166	0.713
GEG50N	50	90	56	36	80	0.6	1	17	172	259	1.14