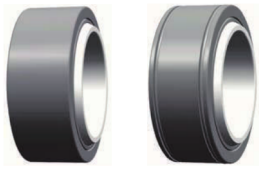
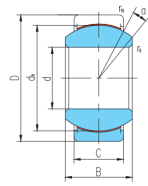


# GEG...ET-2RS,XT-2RS

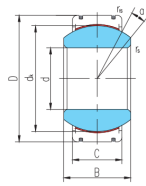


滑动摩擦副: 钢 / PTFE 编织物

Sliding contact surfaces: Steel / PTFE fabric



GEG...ET-2RS



GEG...XT-2RS

select	Inquiry	Bearing number	Overall dimension [mm]								Rated load [kN]		Weight kg
			d	D	B	C	d <sub>k</sub>	r <sub>s</sub> min	r <sub>1s</sub> min	a°	live load	Static load	
GEG15ET-2RS	15	30	16	10	25	0.3	0.3	16	32	75	0.048		
GEG17ET-2RS	17	35	20	12	29	0.3	0.3	19	45	104	0.08		
GEG20ET-2RS	20	42	25	16	35.5	0.3	0.6	17	85	204	0.152		
GEG25ET-2RS	25	47	28	18	40.7	0.6	0.6	17	110	263	0.199		
GEG30ET-2RS	30	55	32	20	47	0.6	1	17	140	338	0.296		
GEG35ET-2RS	35	62	35	22	53	0.6	1	16	175	419	0.402		
GEG40ET-2RS	40	68	40	25	60	0.6	1	17	225	540	0.535		
GEG45ET-2RS	45	75	43	28	66	0.6	1	15	275	665	0.698		
GEG50ET-2RS	50	90	56	36	80	0.6	1	17	430	1030	1.42		
GEG60ET-2RS	60	105	63	40	92	1	1	17	550	1320	2.09		
GEG70ET-2RS	70	120	70	45	105	1	1	16	705	1700	3.01		
GEG80ET-2RS	80	130	75	50	115	1	1	14	860	2070	3.61		
GEG90ET-2RS	90	150	85	55	130	1	1	15	1070	2570	5.5		
GEG100ET-2RS	100	160	85	55	140	1	1	14	1150	2770	6.04		
GEGU0ET-2RS	110	180	100	70	160	1	1	12	1680	4030	9.74		
GEG120XT-2RS	120	210	115	70	180	1	1	16	1890	4530	15.1		
GEG140XT-2RS	140	230	130	80	200	1	1	16	2400	5760	18.9		
GEG160XT-2RS	160	260	135	80	225	1.1	1.1	16	2700	6480	24.8		
GEG180XT-2RS	180	290	155	100	250	1.1	1.1	14	3750	9000	35.9		
GEG200XT-2RS	200	320	165	100	275	1.1	1.1	15	4120	9900	44.9		
GEG220XT-2RS	220	340	175	100	300	1.1	1.1	16	4500	10800	50.9		
GEG240XT-2RS	240	370	190	110	325	1.1	1.1	15	5360	12870	65.3		
GEG260XT-2RS	260	400	205	120	350	1.1	1.1	15	6300	15120	82		
GEG280XT-2RS	280	430	210	120	375	1.1	1.1	15	6750	16200	96.6		