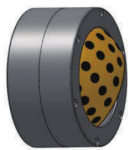
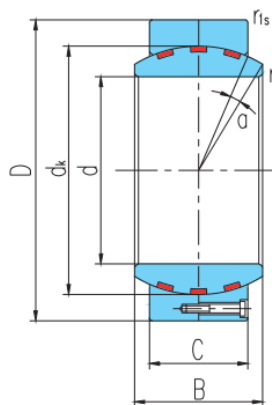


GEH...HF/Q



滑动摩擦副: 钢 / 铜合金
Sliding contact surfaces: Steel / Copper alloy



select	Inquiry	Bearing Number	Overall dimension [mm]								Rated load [kN]		Weight kg
			d	D	B	C	d _k	r _s min	r _{1s} min	a°	live load	Static load	
GEH440HF/Q	440	630	315	300	574	1.5	4	2	17220	34440	370		
GEH460HF/Q	460	650	325	308	593	1.5	4	2	18260	36520	395		
GEH480HF/Q	480	680	340	320	623	2	5	2	19930	39860	453		
GEH500HF/Q	500	710	355	335	643	2	5	2	21540	43080	519		
GEH530HF/Q	530	750	375	355	673	2	5	2	23890	47780	609		
GEH560HF/Q	560	800	400	380	723	2	5	2	27470	54940	754		
GEH600HF/Q	600	850	425	400	773	2	6	2	30920	61840	885		
GEH630HF/Q	630	900	450	425	813	3	6	2	34550	69100	1072		
GEH670HF/Q	670	950	475	450	862	3	6	2	38790	77580	1248		
GEH710HF/Q	710	1000	500	475	912	3	6	2	43320	86640	1440		
GEH750HF/Q	750	1060	530	500	972	3	6	2	48600	97200	1722		
GEH800HF/Q	800	1120	565	530	1022	3	6	2	54160	108320	1998		