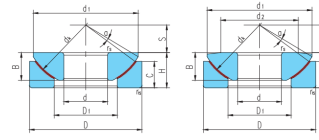
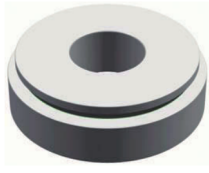


GX..T



$d \leq \phi 200$

$d > \phi 220$

滑动摩擦副: 钢 / PTFE 编织物

Sliding contact surfaces: Steel / PTFE fabric

轴承型号

外形尺寸mm

额定载重量

select Inquiry

Bearing number

d D B C H dk S d1 max d2 D1 min rsr_{1s} min a°

动载荷 静载荷

select Inquiry	Bearing number	d	D	B	C	H	dk	S	d1 max	d2	D1 min	rsr _{1s} min	a°	动载荷	静载荷
GX10T	10	30	7.5	7	9.5	32	7	27.5	15.5	0.6	5	45	120	0.036	
GX12T	12	35	9.5	9.3	13	38	8	32	18	0.6	5	65	165	0.072	
GX15T	15	42	11	10.8	15	46	10	39	22.5	0.6	6	95	235	0.108	
GX17T	17	47	11.8	11.2	16	52	11	43.5	27	0.6	4	110	275	0.137	
GX20T	20	55	14.5	13.8	20	60	12.5	50	31	1	5	150	380	0.246	
GX25T	25	62	16.5	16.7	22.5	68	14	58.5	34.5	1	5	245	600	0.415	
GX30T	30	75	19	19	26	82	17.5	70	42	1	5	335	820	0.614	
GX35T	35	90	22	20.7	28	98	22	84	50.5	1	5	490	1200	0.973	
GX40T	40	105	27	21.5	32	114	24.5	97	59	1	6	675	1640	1.59	
GX45T	45	120	31	25.5	36.5	128	27.5	110	67	1	6	915	2240	2.24	
GX50T	50	130	33	30.5	42.5	139	30	120	70	1	6	1040	2550	3.14	
GX60T	60	150	37	34	45	160	35	140	84	1	6	1360	3470	4.63	
GX70T	70	160	42	36.5	50	176	35	153	94.5	1	3	1640	4180	5.37	
GX80T	80	180	43.5	38	50	197	42.5	172	107.5	1	4	2030	5180	6.91	
GX100I	100	210	51	46	59	222	45	198	127	1.1	4	2230	5940	11	
GX120T	120	230	53.5	50	64	250	52.5	220	145	1.1	3	2610	6960	14	
GX140T	140	260	61	54	72	274	52.5	243	177	1.5	3	3120	8300	19.1	
GX160T	160	290	66	58	77	313	65	271	200	1.5	2	3380	9560	25	
GX180I	180	320	74	62	86	340	67.5	299	225	1.5	4	3910	11050	32.8	
GX200I	200	340	80	66	87	365	70	320	247	1.5	1	4950	13990	35.4	
GX220T	220	370	82	67	97	388	75	350	265	1.5	7	4640	13110	44.7	
GX240T	240	400	87	73	103	420	77.5	382	294	1.5	6	5500	15560	56.9	
GX260T	260	430	95	80	115	449	82.5	409	317	1.5	7	6190	17510	71.3	
GX280I	280	460	100	85	110	480	80	445	337	3	4	8280	23400	84.7	
GX300T	300	480	100	90	110	490	80	460	356	3	3.5	9010	25480	88.9	
GX320T	320	520	105	91	116	540	95	500	405	4	4	11360	33260	111	

GX..T

GX340T	340	540	105	91	116	550	95	510	432	380	4	4	11570	33880	117
GX360I	360	560	115	95	125	575	95	535	452	400	4	4	12850	37630	132