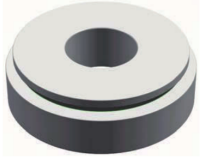
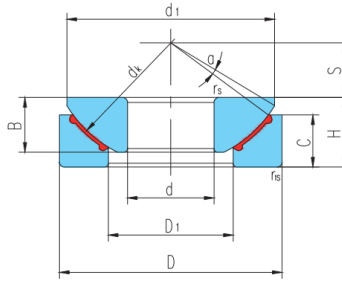


# GX..N



滑动摩擦副: 钢 / PTFE 塑料

Sliding contact surfaces: Steel / PTFE plastic



Overall dimension [mm]

Rated load [kN] Weight

select	Inquiry	Bearing Number	Overall dimension [mm]											Rated load [kN]		Weight kg
			d	D	B	C	H	dk	S	d1 max	D1 min	rsr min	rls	a°	live load	
GX17N	17	47	11.8	11.2	16	52	11	43.5	27	0.6	4	32	52	0.137		
GX20N	20	55	14.5	13.8	20	60	12.5	50	31	1	5	44	71	0.246		
GX25N	25	62	16.5	16.7	22.5	68	14	58.5	34.5	1	5	65	104	0.415		
GX30N	30	75	19	19	26	82	17.5	70	42	1	5	88	141	0.614		
GX35N	35	90	22	20.7	28	98	22	84	50.5	1	5	129	207	0.973		
GX40N	40	105	27	21.5	32	114	24.5	97	59	1	6	169	270	1.59		
GX45N	45	120	31	25.5	36.5	128	27.5	110	67	1	6	230	368	2.24		
GX50N	50	130	33	30.5	42.5	139	30	120	70	1	6	262	420	3.14		
GX60N	60	150	37	34	45	160	35	140	84	1	6	374	599	4.63		
GX70N	70	160	42	36.5	50	176	35	153	94.5	1	3	451	722	5.37		
GX80N	80	180	43.5	38	50	197	42.5	172	107.5	1	4	558	893	6.91		
GX100N	100	210	51	46	59	222	45	198	127	1.1	4	717	1140	11		
GX120N	120	230	53.5	50	64	250	52.5	220	145	1.1	3	839	1340	14		