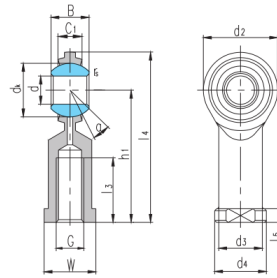


SIZJ..



滑动摩擦副: 钢 / 钢

Sliding contact surfaces: Steel / Steel

select	Inquiry	Bearing number	Dimension mm														load rating kN		Weight kg
			d	B	d _k	C ₁ max	d ₂	G	h ₁	l ₃ min	l ₄	l ₅	W	d ₃	d ₄	rs min	a°	dynamic load	
SIZJ4	4.83	7.92	n.i	5.94	15.88	10-32	26.97	12.7	34.93	4.75	7.92	7.54	10.31	0.3	10	3.6	6.8	0.018	
SIZJ4	0.19	0.312	0.437	0.234	0.625	10-32	1.062	0.5	1.375	0.187	0.312	0.297	0.406	0.012	10	3.6	6.8	0.018	
SIZJ6	6.35	9.53	12.7	6.35	19.05	1/4-28	33.32	15.88	42.85	4.75	9.53	9.15	11.91	0.3	13.5	5.4	9.6	0.023	
SIZJ6	0.25	0.375	0.5	0.25	0.75	1/4-28	1.312	0.625	1.687	0.187	0.375	0.36	0.469	0.012	13.5	5.4	9.6	0.023	
SIZJ7	7.94	11.1	15.88	7.92	22.23	5/16-24	34.93	15.88	46.02	4.75	11.1	10.72	12.7	0.3	11	8.5	12	0.036	
SIZJ7	0.3125	0.437	0.625	0.312	0.875	5/16-24	1.375	0.625	1.812	0.187	0.437	0.422	0.5	0.012	11	8.5	12	0.036	
SIZJ9	9.53	12.7	18.26	9.12	25.4	3/8-24	41.28	19.05	53.98	6.35	14.27	13.89	17.45	0.6	11	11	16	0.059	
SIZJ9	0.375	0.5	0.719	0.359	1	3/8-24	1.625	0.75	2.125	0.25	0.562	0.547	0.687	0.024	11	11	16	0.059	
SIZJ11	11.11	14.27	20.62	10.31	28.58	7/16-20	46.02	22.23	60.33	6.35	15.88	15.49	19.05	0.6	10.5	14	21	0.082	
SIZJ11	0.4375	0.562	0.812	0.406	1.125	7/16-20	1.812	0.875	2.375	0.25	0.625	0.61	0.75	0.024	10.5	14	21	0.082	
SIZJ12	12.7	15.88	23.81	11.5	33.32	1/2-20	53.98	25.4	70.64	6.35	19.05	18.67	22.23	0.6	10	18	28	0.132	
SIZJ12	0.5	0.625	0.937	0.453	1.312	1/2-20	2.125	1	2.781	0.25	0.75	0.735	0.875	0.024	10	18	28	0.132	
SIZJ15	15.88	19.05	28.58	12.29	38.1	5/8-18	63.5	31.75	82.55	7.92	22.23	21.84	25.4	0.6	13	23	29	0.195	
SIZJ15	0.625	0.75	1.125	0.484	1.5	5/8-18	2.5	1.25	3.25	0.312	0.875	0.86	1	0.024	13	23	29	0.195	
SIZJ19	19.05	22.23	33.32	15.06	44.45	3/4-16	73.03	34.93	95.25	7.92	25.4	25.02	28.58	0.6	12	34	44	0.295	
SIZJ19	0.75	0.875	1.312	0.593	1.75	3/4-16	2.875	1.375	3.75	0.312	1	0.985	1.125	0.024	12	34	44	0.295	