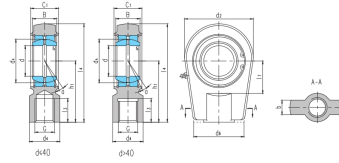


# SIRN...ES



滑动摩擦副: 钢 / 钢

Sliding contact surfaces: Steel / Steel

| select                               | Inquiry | Bearing number | Dimension mm |    |                |                |                |         |                |                |                |                |                |                |   |                |      | Load rating kN |             | Weight<br>≈ kg |
|--------------------------------------|---------|----------------|--------------|----|----------------|----------------|----------------|---------|----------------|----------------|----------------|----------------|----------------|----------------|---|----------------|------|----------------|-------------|----------------|
|                                      |         |                | d            | B  | d <sub>k</sub> | C <sub>1</sub> | d <sub>2</sub> | G<br>6H | h <sub>1</sub> | l <sub>3</sub> | l <sub>4</sub> | l <sub>7</sub> | d <sub>4</sub> | d <sub>6</sub> | b | r <sub>s</sub> | a°   | Dynamic load   | Static load |                |
| SIRN20ES                             | 20      | 16             | 29           | 19 | 56             | M16x1.5        | 50             | 17      | 80             | 25             | 25             | 46             | 20             | 0.3            | 9 | 30             | 81   | 0.44           |             |                |
| SIRN25ES                             | 25      | 20             | 35.5         | 23 | 56             | M16x1.5        | 50             | 17      | 80             | 25             | 25             | 46             | 21             | 0.6            | 7 | 48             | 72   | 0.47           |             |                |
| SIRN30ES                             | 30      | 22             | 40.7         | 28 | 64             | M22x1.5        | 60             | 23      | 94             | 30             | 32             | 50             | 26             | 0.6            | 6 | 62             | 106  | 0.77           |             |                |
| SIRN35ES                             | 35      | 25             | 47           | 30 | 78             | M28x1.5        | 70             | 29      | 112            | 38             | 40             | 66             | 28             | 0.6            | 6 | 79             | 153  | 1.24           |             |                |
| SIRN40ES                             | 40      | 28             | 53           | 35 | 94             | M35x1.5        | 85             | 36      | 135            | 45             | 49             | 76             | 33             | 0.6            | 7 | 99             | 250  | 2.12           |             |                |
| SIRN50ES                             | 50      | 35             | 66           | 40 | 116            | M45x1.5        | 105            | 45      | 168            | 55             | 61             | 90             | 37             | 0.6            | 6 | 156            | 365  | 3.74           |             |                |
| SIRN60ES                             | 60      | 44             | 80           | 50 | 130            | M58x1.5        | 130            | 59      | 200            | 65             | 75             | 120            | 46             | 1              | 6 | 245            | 400  | 6.49           |             |                |
| SIRN60ES-D <sup>1)</sup>             | 60      | 44             | 80           | 50 | 130            | M58x1.5        | 130            | 59      | 200            | 65             | 75             | 120            | 46             | 1              | 6 | 245            | 400  | 6.49           |             |                |
| SIRN70ES<br>SIRN70ES-D <sup>1)</sup> | 70      | 49             | 92           | 55 | 154            | M65x1.5        | 150            | 66      | 232            | 75             | 86             | 130            | 51             | 1              | 6 | 313            | 540  | 9.88           |             |                |
| SIRN80ES<br>SIRN80ES-D <sup>1)</sup> | 80      | 55             | 105          | 60 | 176            | M80x2          | 170            | 81      | 265            | 80             | 105            | 160            | 55             | 1              | 6 | 400            | 670  | 14.2           |             |                |
| SIRN90ES<br>SIRN90ES-D <sup>1)</sup> | 90      | 60             | 115          | 65 | 206            | M100x2         | 210            | 101     | 323            | 90             | 124            | 180            | 60             | 1              | 5 | 488            | 980  | 23.5           |             |                |
| SIRN100ES                            | 100     | 70             | 130          | 70 | 231            | M110x2         | 235            | 111     | 360            | 105            | 138            | 200            | 65             | 1              | 7 | 607            | 1120 | 32.14          |             |                |
| SIRN110ES                            | 110     | 70             | 140          | 80 | 266            | M120x3         | 265            | 125     | 407            | 115            | 152            | 220            | 74             | 1              | 6 | 654            | 1700 | 47.6           |             |                |
| SIRN120ES                            | 120     | 85             | 160          | 90 | 340            | M130x3         | 310            | 135     | 490            | 140            | 172            | 257            | 84             | 1              | 6 | 950            | 2900 | 72             |             |                |