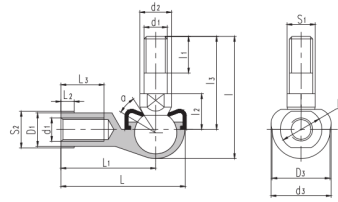


SQ..-RS



滑动摩擦副：钢 / 锌基合金
Sliding contact surfaces: Steel / Zinc base alloy

select	Inquiry	Bearing number	Dimensions																	Static load ratings kN	Weight kg
			d ₁	d ₂	d ₃	l	l ₁	l ₂	l ₃	S ₁	L	L ₁	L ₂	L ₃	D ₁	D ₂	D ₃	S ₂	a°		
SQ5-RS	M5	9	19	29	8	10	21	7	35	27	4	14	9	11	16	9	25	2.2	0.026		
SQ6-RS	M6	10	20	35.5	11	11	26	8	40	30.5	5	14	10	13	19	11	25	3.5	0.039		
SQ8-RS	M8	12	24	42.5	12	14	31	10	48	36.5	5	17	12.5	16	23	14	25	6.6	0.068		
SQ10-RS	M10x1.25	14	30	50.5	15	17	37	11	57	43.5	6.5	21	15	19	27	17	25	10	0.112		
SQ12-RS	M12x1.25	17	32	57.5	17	19	42	15	66	50.5	6.5	25	17.5	22	31	19	25	16	0.164		
SQ14-RS	M14x1.5	19	38	73.5	22	21.5	56	17	75	57.5	8	26	20	25	35	22	25	19	0.254		
SQ16-RS	M16x1.5	22	44	79.5	23	23.5	60	19	84	64.5	8	32	22	27	39	22	20	26	0.336		
SQ18RS	M18x1.5	23	45	90	25	26.5	68	20	93	71	10	34	25	31	44	27	20	33	0.464		
SQ20RS	M20x1.5	27	50	90	25	27	68	24	99	77	10	35	27.5	34	44	30	20	45	0.538		
SQ22RS	M22x1.5	27	52	95	26	28	70	24	109	84	12	41	30	37	50	32	16	48	0.713		