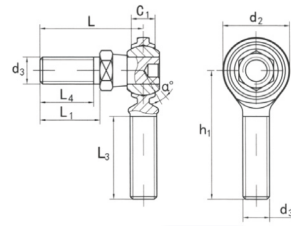
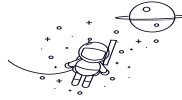


# CM...Y,YS



select	Inquiry	Part No.		Dimensions mm									Lord	Weight
		Right hand	Left hand	d <sub>3</sub> UNF-3A	C <sub>1</sub>	d <sub>2</sub>	h <sub>1</sub>	L <sub>3</sub> min	L	L <sub>1</sub>	L <sub>4</sub>	a ≈	KN	kg
CM 3Y*	CML3Y*	10-32	5.94	15.88	31.75	19.05	25.4	12.7	11.1	10	5.355	0.018		
CM4Y*	CML4Y*	1/4-28	6.35	19.05	39.67	25.4	26.19	14.27	12.7	133	9.839	0.023		
CM 5Y*	CML5Y*	5/16-24	7.92	22.23	47.63	31.75	30.96	17.45	15.06	11	15.91	0.045		
CM6Y	CML6Y	3/8-24	9.12	25.4	49.23	31.75	39.67	23.01	20.62	11	22.542	0.068		
CM7Y	CML7Y	7/16-20	10.31	28.58	53.98	34.93	44.45	26.97	23.8	10.5	28.223	0.109		
CM8Y	CML8Y	1/2-20	11.5	33.32	61.93	38.1	50.8	25.58	25.4	10	37.087	0.159		
CM 10Y	CML10Y	5/8-18	12.29	38.1	66.68	41.28	615	38.1	34.93	13	43.023	0.277		
CM 12Y	CML12Y	3/4-16	15.06	44.45	73.03	44.45	76.2	46.02	41.28	12	63.193	0.467		