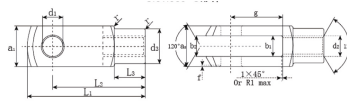


Clevises



select	Inquiry	Bearing number	Dimensions													Weight	
			d_1 H9	g ± 0.5	a_1 h11	a_2 $+0.30$ -0.16	b_1 B13	b_2	d_2	d_3 ± 0.3	f ± 0.2	L_1 ± 0.5	L_2	L_3 ± 0.2	r	kg	
SG4 x 8	4	8	8	8	4	4 $+0.33$ $+0.15$	M4 x 0.7	8	0.5	21	16 ± 0.3	6	0.5	0.005			
SG4 x 16	4	16	8	K	4	4 $+0.33$ $+0.15$	M4 x 0.7	8	0.5	29	24 ± 0.3	6	0.5	0.007			
SG5 x 10	5	10	10	10	5	5 $+0.33$ $+0.15$	M5 x 0.8	9	0.5	26	20 \pm 03	7.5	0.5	0.009			
SG5 x 20	5	20	10	10	5	5 $+0.33$ $+0.15$	MS x 0.8	9	0.5	36	30 \pm 03	7.5	0.5	0.013			
SG6x 12	6	12	12	12	6	6 $+0.33$ $+0.15$	M6x 1.0	10	0.5	31	24 \pm 0.3	9	0.5	0.015			
SG6x24	6	24	12	12	6	6 $+0.33$ $+0.15$	M6x 1.0	10	0.5	43	36 ± 0.4	9	0.5	0.021			
SG8x 16	8	16	16	16	8	8 $+0.33$ $+0.15$	M8x 1.25	14	0.5	42	32 \pm 04	12	0.5	0.037			
SG8x 16/B1	8	16	16	16	8	8 $+0.33$ $+0.15$	M8x 1.0	14	0.5	42	32 \pm 04	12	0.5	0.037			
SG8 x 32	8	32	16	16	8	8 $+0.33$ $+0.15$	Mx 1.25	14	0.5	58	48 \pm 0.4	12	0.5	0.054			
SG8x32/B1	8	32	16	16	8	8 $+0.33$ $+0.15$	M8x 1.0	14	0.5	58	48 \pm 0.4	12	0.5	0.054			
SG10x20	10	20	20	20	10	10 $+0.33$ $+0.15$	M10 x 1.5	18	0.5	52	40 ± 0.4	15	0.5	0.074			
SG10 x 20/B1	10	20	20	20	10	10 $+0.33$ $+0.15$	M10x 1.25	18	0.5	52	40 ± 0.4	15	0.5	0.074			

Clevises

SG10x40	10	40	20	20	10	10 +0.33 +0.15	M10x 1.5	18	0.5	72	60±0.4	15	0.5	0.116
SG10x40/B1	10	40	20	20	10	10 +0.33 +0.15	M10x 1.25	18	0.5	72	60±0.4	15	0.5	0.116
SG 12x24	12	24	24	24	12	12 +0.70 +0.15	M12x 1.75	20	0.5	62	48±0.4	18	0.5	0.121
SG12x24/B2	12	24	24	24	12	12 +0.70 +0.15	M12x L25	20	0.5	62	48±0.4	18	0.5	0.121
SG12x48	12	48	24	24	12	12 +0.70 +0.15	M12x 1.75	20	0.5	86	72 ±0.4	18	0.5	0.175
SG12x48/B2	12	48	24	24	12	12 +0.70 +0.15	M12x 1.25	20	0.5	86	72 ±0.4	18	0.5	0.175
SG14x28	14	28	27	27	14	14 +0.70 +0.15	M14x2.0	24	1	72	56 ±0.4	22.5	1	0.178
SGI4x28/B1	14	28	27	27	14	14 +0.70 +0.15	M14x 1.5	24	1.0	75	56 ±0.4	22.5	1.0	0.178
SG14 x56	14	56	27	27	14	14 +0.70 +0.15	M14x 2.0	24	1	101	85 ± 0.4	22.5	1	0.258
SG14 x56/B1	14	56	27	27	14	14 +0.70 +0.15	M14x 1.5	24	1.0	101	85 ± 0.4	22.5	1.0	0.258
SG16x32	16	64	32	32	16	16 +0.70 +0.15	M16x 2.0	26	1	83	64 ±04	24	1	0.282
SG16x32/B1	16	32	32	32	16	16 +0.70 +0.15	M16x 1.5	26	1.0	83	64 ±04	24	1.0	0.282
SG16x 64	16	64	32	32	16	16 +0.70 +0.15	M16x 2.0	26	1	115	96 ± 0.4	24	1	0.411
SG16x 64/B1	16	64	32	32	16	16 +0.70 +0.15	M16 x 1.5	26	1.0	115	96 ± 0.4	24	1.0	0.411
SG18 x36/B	18	36	36	36	18	18 +0.70 +0.15	M18 x 2.5	30	1	94	72 ± 0.4	27	1.5	0.39
SG18 x36	18	36	36	36	18	18 +0.70 +0.15	M18x 1.5	30	1.0	94	72 ± 0.4	27	1.5	0.39
SG20 x 40/B	20	40	40	40	20	20 +0.70 +0.15	M20 x 2.5	34	1	105	80± 0.4	30	1.5	0.55

Clevises

SG20 x 40	20	40	40	40	20	20 +0.70 +0.15	M20 x 1.5	34	1.0	105	80 ± 0.4	30	1.5	0.55
-----------	----	----	----	----	----	----------------------	--------------	----	-----	-----	-------------	----	-----	------